

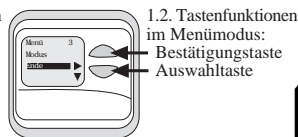
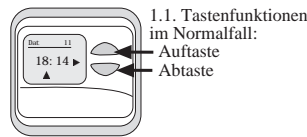
Bedienungs-/Montageanleitung
Programmschaltuhr



ab Software Version 1.42

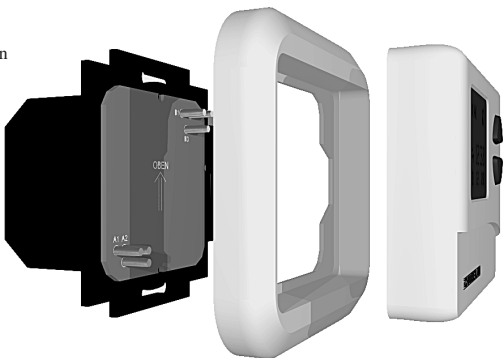
TCT2ED

1. Programmschaltuhr TCT2ED



1.3. Zeichenerklärung (Displayanzeige)

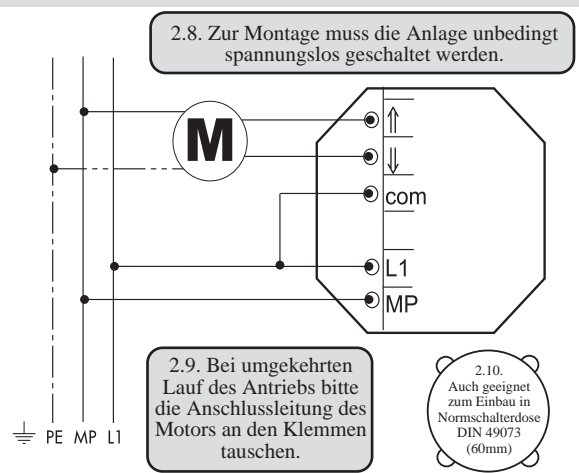
- ☀ 1.4. Sommerzeit
- ❄ 1.5. Winterzeit
- A1 1.6. Tägliche automatische Öffnung und Schließung zu einer programmierten Zeit.
- A7 1.7. Tägliche automatische Öffnung und Schließung zu unterschiedlichen Zeiten.
- 🔋 1.8. Netzausfall. Uhr läuft im Batteriebetrieb. Ist die Stromzufuhr unterbrochen erscheint ein Batteriezeichen im Display. Die Uhr kann dann nicht in den Menümodus umgeschaltet werden.



1.9. Die Teile werden einfach ineinander gesteckt und können durch vorsichtiges Herausziehen wieder gelöst werden.

2. Vor der Montage bitte unbedingt beachten

- ⚠ 2.1. **Sicherheitshinweise**
- ⚠ 2.2. Solche Warnzeichen bedeuten „VORSICHT“, eine Aufforderung zur Beachtung, da ihre Missachtung Personen-bzw. Sachschäden verursachen kann. Bitte lesen Sie diese Warnungen sorgfältig.
- ⚠ 2.3. Die Nichtbeachtung der folgenden Sicherheitsregeln kann ernsthafte Personen- oder Sachschäden verursachen.
- ⚠ 2.4. Achtung: Für die Sicherheit von Personen ist es wichtig, diese Anweisungen zu befolgen. Diese Anweisungen sind aufzubewahren.
- ⚠ 2.5. Errichten, Prüfen und Inbetriebnahme des 230V Anschlusses darf nur von einem Elektrofachmann ausgeführt werden.
- ⚠ 2.6. Installation und Verdrahtung müssen gemäß den örtlichen Bau- und Elektrovorschriften erfolgen.
- ⚠ 2.7. Kindern nicht erlauben, mit Bedieneinheiten zu spielen, Bedieneinheiten von Kindern fernhalten.



3. Installation

3.1. Mit der Zeitschaltuhr TCT2ED von Chamberlain können Sie ihre Rollläden komfortabel steuern. Der gewöhnliche Schalter wird einfach gegen die TCT2ED ersetzt. Bitte beachten Sie dabei die Installations- und Sicherheitshinweise.

3.2. Der eingebaute Zeitschalter bietet Ihnen zusätzlichen Komfort: Programmieren Sie eine feste, tägliche Öffnungs- und Schließzeit für Ihren Rollläden oder Ihre Markise oder programmieren Sie für jeden einzelnen Wochentag eine andere Öffnungs- und Schließzeit. Sie können die Rollläden auch morgens automatisch öffnen lassen, um sie abends wieder manuell zu schließen und umgekehrt.

3.3. Darüberhinaus lässt sich zusätzlich der optional erhältliche Kabellichtsensor WTMLS1 anschließen. Mit dem Kabellichtsensor können sie ihre Rollläden sogar helligkeitsabhängig öffnen und schließen lassen. Dies spart Energie und schützt ihre Räume vor zu starker Sonneneinstrahlung.

4. Bedienung

4.1. Nach der fachgerechten Installation können Sie sofort alle notwendigen Einstellungen vornehmen. Sie müssen zuerst Datum und Uhrzeit einstellen. Danach können Sie die Programmierungen vornehmen. Die Bedienung ist recht einfach. Drücken Sie für mehrere Sekunden beide Tasten an der TCTED gleichzeitig, um in den Menümodus zu gelangen. Wählen Sie mit der Abtaste den gewünschten Menüpunkt aus. Der ausgewählte Menüpunkt wird im Display schwarz unterlegt. Bestätigen Sie anschließend Ihre Wahl immer mit der Auf-Taste, dann erst wird die gewünschte Funktion ausgeführt.



4.2. Drücken Sie beide Tasten für mehrere Sekunden gleichzeitig, um in den Menümodus zu gelangen.



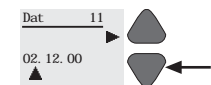
4.3. Wählen Sie mit der Abtaste die gewünschte Funktion aus, bis sie im Display schwarz unterlegt ist.

5. Auswahl der Landessprache

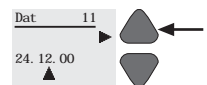
5.1. Gehen Sie in den Menümodus, wählen Sie *Einstl.* und dann *Sprache*. Wählen Sie dann *Deutsch* oder eine andere Sprache. Wählen Sie danach *Ende*.

6. Einstellung von Uhrzeit und Datum

6.1. Gehen Sie in den Menümodus, wählen Sie *Einstl.* und dann *Datum*. Wählen Sie mit der Abtaste Tag, Monat und Jahr aus und bestätigen Sie jeweils mit der Auf Taste. 6.2. Wählen Sie nun *Uhrzeit*. Wählen Sie mit der Abtaste Stunden und Minuten aus und bestätigen Sie jeweils mit der Auf Taste. Datum und Uhrzeit sind jetzt korrekt eingestellt.



6.3. Drücken Sie die Abtaste, bis der gewünschte Tag erscheint.



6.4. Drücken Sie dann die Auf Taste. Der Pfeil springt weiter zur Monatsangabe.

7. Tägliches Öffnen und Schließen der Rollläden zu einem festen Zeitpunkt.

7.1. Die TCT2ED kann ihre Rollläden morgens zu einem festen Zeitpunkt öffnen und abends zu einem festen Zeitpunkt wieder schließen. Gehen Sie in den Menümodus. Wählen Sie *Einstl.*, dann *Prog.* und dann *Tägl.* Geben Sie eine Öffnungszeit ein und bestätigen Sie die Stunden und Minuten mit der Auf Taste. Geben Sie dann eine Schließzeit ein und bestätigen Sie die Stunden und Minuten wieder mit der Auf Taste. Wählen Sie dann *Zurück* und nochmals *Zurück*. Wählen Sie dann *Modus* und danach *Autom.* Wählen Sie *Ein*. Die Uhr springt in den Normalmodus zurück. Gehen Sie nochmals in den Menümodus. Wählen Sie *Modus* und dann *Pr-Mod*. Wählen Sie *Wo-Prg.* Auf dem Display erscheint oben links in der Ecke *A1*. (Bei Software Version 1.41 erscheint nur *A*.) Der Rollläden wird sich nun jeden Tag zu den programmierten Zeiten öffnen und wieder schließen.

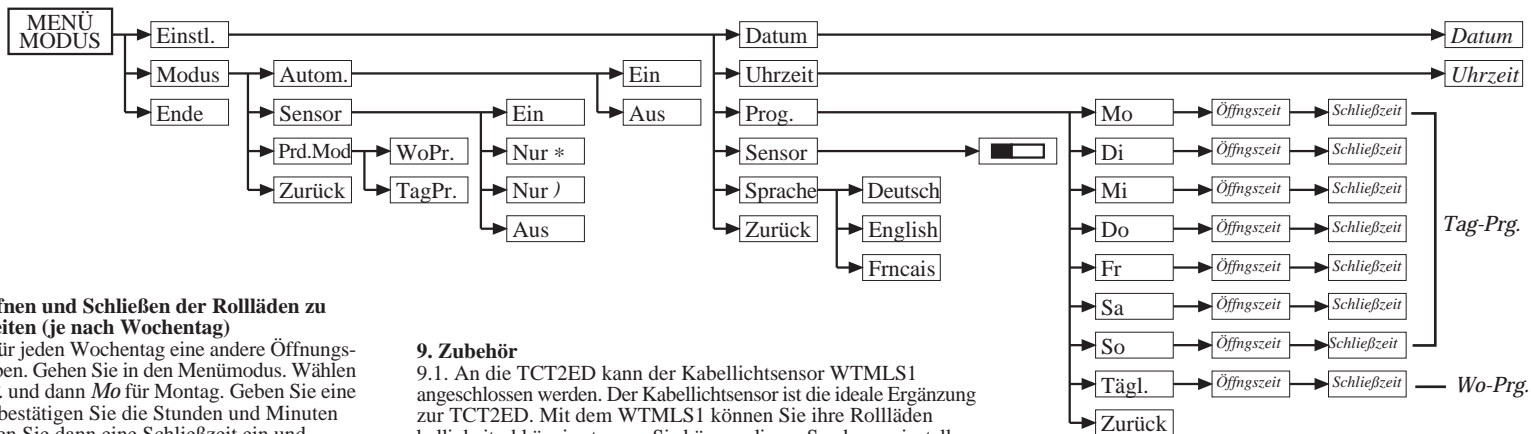


7.2. Im Programmmodus „A1“ öffnet und schließt sich der Rollläden jeden Tag automatisch zur eingeprogrammierten Zeit. (Bei Software Version 1.41 erscheint nur „A“.)



7.3. Im Programmmodus „A7“ öffnet und schließt sich der Rollläden jeden Wochentag automatisch zu einer individuell eingeprogrammierten Zeit. (Bei Software Version 1.41 erscheint nur „A“.)

Menüstruktur



8. Automatisches Öffnen und Schließen der Rollläden zu unterschiedlichen Zeiten (je nach Wochentag)

8.1. Sie können auch für jeden Wochentag eine andere Öffnungs- und Schließzeit eingeben. Gehen Sie in den Menümodus. Wählen Sie *Einstl.*, dann *Prog.* und dann *Mo* für Montag. Geben Sie eine Öffnungszeit ein und bestätigen Sie die Stunden und Minuten mit der Auf Taste. Geben Sie dann eine Schließzeit ein und bestätigen Sie die Stunden und Minuten wieder mit der Auf Taste. Wählen Sie nun alle anderen Wochentage aus und programmieren Sie die Öffnungs- und Schließzeiten. Wählen Sie dann *Zurück* und nochmals *Zurück*. Wählen Sie *Modus* und danach *Autom.* Wählen Sie *Ein*. Die Uhr springt in den Normalmodus zurück. Gehen Sie nochmals in den Menümodus. Wählen Sie *Modus* und dann *Pr-Mod*. Wählen Sie *Tag-Prg.* Auf dem Display erscheint oben links in der Ecke *A7*. (Bei Software Version 1.41 erscheint nur *A*.) Der Rollläden wird sich nun an jedem Tag zur individuell programmierten Zeit öffnen und wieder schließen.

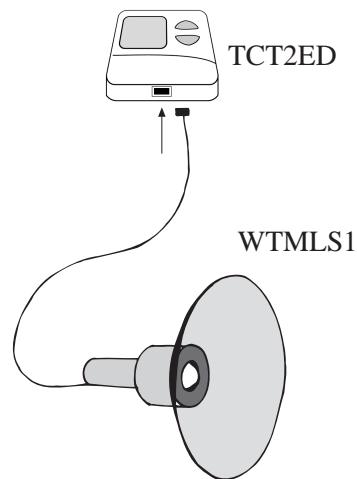
8.2. Wenn Sie anstatt einer Stundenzahl einen Doppelstrich (--) eingeben, wird die Öffnungs-, bzw., Schließzeit deaktiviert. (--) erscheint nach der 23. Sie können diese Funktion benutzen, um den Rollläden abends automatisch schließen zu lassen, um ihn dann morgens wieder manuell zu öffnen und umgekehrt.

8.3. Unter dem Menüpunkt *Pr-Mod*, können sie bequem zwischen den beiden Automatikprogrammen hin und her schalten. Die Einstellungen des jeweils deaktivierten Programms bleiben dabei erhalten. *Tag-Prg.* = 7 verschiedene Tage *Wo-Prg.* = eine Einstellung für alle Tage (täglich)

8.4. Unter dem Menüpunkt *Autom.* können die Automatikfunktionen ganz abgeschaltet werden. Auch hier bleiben die einprogrammierten Zeiten gespeichert.

9. Zubehör

9.1. An die TCT2ED kann der Kabellichtsensor WTMLS1 angeschlossen werden. Der Kabellichtsensor ist die ideale Ergänzung zur TCT2ED. Mit dem WTMLS1 können Sie ihre Rollläden helligkeitsabhängig steuern. Sie können diesen Sender so einstellen, dass er bei zu starker Sonneneinstrahlung die Läden automatisch schließt und sie bei nachlassender Sonneneinstrahlung wieder öffnet. Auch kann der WTMLS1 Ihre Läden abends bei Einbruch der Dämmerung schließen. (Im Sommer später und im Winter früher.) Das spart Heizkosten und Energie. Der Einbau des Kabellichtsensors WTMLS1 kann auch nachträglich erfolgen. Sie erhalten ihn als Zubehör.



10. Wenn's mal nicht funktioniert...

10.1. Die Uhr springt nicht in den Menümodus um.

-Halten Sie beide Tasten länger als 4 Sekunden gedrückt. -Überprüfen Sie die Stromzufuhr. Ist die Stromzufuhr unterbrochen erscheint ein Batteriezeichen im Display. Die Uhr kann dann nicht in den Menümodus umgeschaltet werden.

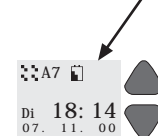
10.2. Die Menüpunkte funktionieren nicht.

-Drücken Sie so oft die Abtaste bis der gewünschte Menüpunkt schwarz unterlegt ist. Drücken Sie dann die Auf Taste, um Ihre Wahl zu bestätigen.

10.3. Die Rollläden reagieren nicht zur gewünschten Uhrzeit.

-Überprüfen Sie die Einstellungen von Datum und Uhrzeit. -Aktivieren Sie die Programmfunktion im Menü *Autom.* -Aktivieren sie den korrekten Programm-Modus im Menü *Pr-Mod*.

10.4. Bei Stromunterbrechung kann die Uhr nicht programmiert werden. Im Display leuchtet ein Batteriezeichen.



10.5. Hotline +49 (0) 68 38 907 100

11. Technische Informationen

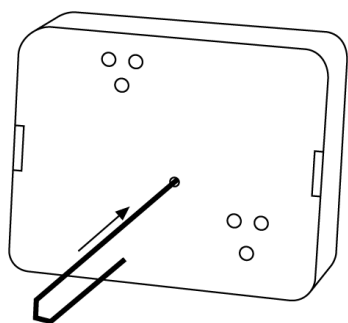
- Betriebsspannung230V/50Hz
- Kontaktbelastbarkeitmax. 5 A/230V
- Schaltspannungmax. ~230V
- Relaisausgang230V/50Hz für 60 Sek. aktiv
- Schutzart SteuergerätIP 40
- Betriebstemperaturbereich0 bis 40°C
- SprachenDeutsch, Französisch, Englisch
- RahmenBusch-Jaeger alpha nea®
- Prüfzeichen



11.1. Die interne Batterie ist ein Akku und braucht nicht gewechselt zu werden.

11.2. Technische Änderungen dienen dem Fortschritt und bleiben vorbehalten.

12. Reset



12.1. Bei Betätigung der Reset-Taste werden alle Programmparameter und Einstellungen gelöscht.

13. Garantie

Chamberlain GmbH gewährleistet dem Erstkäufer einer Programmschaltuhr für einen Zeitraum von 24 Monaten (2 Jahre) ab Kaufdatum, dass dieses Produkt frei von Material- und/oder Verarbeitungsfehlern ist. Der Erstkäufer ist verpflichtet, das Produkt bei Empfang auf sichtbare Defekte zu überprüfen. **Konditionen:** Die Garantie bezieht sich ausschließlich auf die Reparatur oder den Ersatz von defekten Geräteteilen und deckt nicht die Kosten oder Risiken des Transports der defekten Teile oder Produkte. Diese Garantie deckt keine Schäden, die keine Defekte darstellen und durch unsachgemäßen Gebrauch verursacht wurden (einschließlich des Gebrauchs unter unvollständiger Einhaltung von Chamberlains Anweisungen zu Installation, Betrieb und Instandhaltung; versäumte Instandhaltung oder Einstellung; jegliche Anpassungen oder Änderungen am Produkt), Arbeitskosten für den Abbau oder Wiedereinbau einer reparierten oder Ersatzzeitheit bzw. Ersatzbatterien. Ein von der Garantie gedecktes Produkt, das Material- oder Verarbeitungsfehler aufweist, wird (nach Ermessen von Chamberlain GmbH) kostenlos repariert oder ersetzt. Es liegt im Ermessen von Chamberlain GmbH, ob die defekten Teile repariert bzw. durch neue oder im Werk überholte Teile ersetzt werden. Falls das Produkt während der Garantiezeit defekt erscheint, wenden Sie sich bitte an Ihren Verkäufer. Diese Garantie schränkt die Rechte des Käufers nach den national gültigen Gesetzen nicht ein. Sie hat auch keine Auswirkung auf die Rechte des Käufers gegen den Verkäufer, die sich aus dem Kaufvertrag ergeben. Dort, wo keine geltenden nationalen oder EU-Gesetze gelten, ist diese Garantie das einzige Rechtsmittel des Käufers und weder Chamberlain GmbH noch ihre Filialen oder Vertreter sind für Neben- oder Folgeschäden für ausdrückliche oder stillschweigende Garantien im Zusammenhang mit diesem Produkt haftbar. Niemand, auch kein Vertreter, ist berechtigt, für Chamberlain GmbH irgendwelche andere Haftungen in Verbindung mit dem Verkauf dieses Produkts zu übernehmen.

14. Konformitätserklärung

14.1. Konformitätserklärung Die Programmschaltuhr Modell Nr. TCT2ED erfüllt alle Bedingungen der Richtlinien EN55014, EN61000-3, ETS RES 0908, EN60555, & EN60335-1 sowie die Zusätze 73/23/EEC, 89/336/EEC

14.2. Integrationserklärung Die Programmschaltuhr Modell TCT2ED erfüllt, wenn sie in Verbindung mit einem Rollläden oder Markise gemäß Herstelleranweisungen installiert und instand gehalten wird, alle Bedingungen der EU-Richtlinie 89/392/EEC und deren Zusätze.

14.3. Ich, der Unterzeichner, erkläre hiermit, dass das vorstehend genannte Gerät und das in der Montageanleitung aufgeführte Zubehör die vorstehenden Vorschriften und Richtlinien erfüllt.

Colin B. Willmott -Chefingenieur- Chamberlain GmbH D-66793 Saarwellingen Februar 2001 © 2001 Chamberlain GmbH



CHAMBERLAIN™



Software
1.42

TCT2ED

CHAMBERLAIN Operation and installation instructions TCT2ED Programmable Time Switch



1. TCT2ED Programmable Time Switch

1.1.Key functions in normal situation:
UP key
DOWN key

1.2. Key functions in menu mode:

Confirmation key

Selection key

1.3. Explanation of symbols (display)

1.4. Summer time

1.5. Winter time

1.6. Daily automatic opening and closing of shutters at programmed times.

1.7. Daily automatic opening and closing of shutters at different times.

1.8. Mains failure. The clock continues to run in battery operation. If the power supply is interrupted a battery symbol will appear on the display. The clock cannot then be switched over to menu mode.

1.9. The parts are simply plugged together and can be separated again by carefully withdrawing them.

2. Please read before installation

2.1. Safety Instructions

2.2.These safety alert symbols mean Caution - a personal safety or property damage instruction. Please read those warnings carefully.

2.3. Failure to comply with the following instructions may result in serious personal injury or property damage.

2.4.Warning: IT IS IMPORTANT FOR THE SAFETY OF PERSONS TO FOLLOW THESE INSTRUCTIONS. SAVE THESE INSTRUCTIONS.

2.5.Installation, examination and operation of the 230V connection should be performed by an electrician.

2.6.Installation and wiring must be in compliance with your local building and electrical codes.

2.7.Do not allow children to play with fixed controls. Keep remote controls away from children.

2.8. For assembly purposes it is essential to ensure that the unit has no power switched to it.

2.9. If the drive runs backwards please exchange the connecting lines to the motor at the terminals.

2.10. Also suitable for installation in a standard DIN 49073 switch socket (60mm)

3. Installation

3.1. With the TCT2ED time switch from Chamberlain you can easily control your roller shutters. The normal switch is simply replaced by the TCT2ED unit. When doing so please follow the installation and safety instructions.

3.2. The built-in time switch offers you additional facilities: You can program fixed daily opening and closing times for your roller shutters or awnings or you can program different opening and closing times for each day of the week. You can also arrange for the roller shutters to open automatically in the mornings and close them manually in the evenings as well as vice versa.

3.3. In addition you can connect the optional WTMLS1 optical cable sensor. With the optical cable sensor you can even have your roller shutters opened or closed according to the level of brightness. The safety entry protects your room from the sun's radiation when it is too strong.

4. Operation

4.1. Following expert installation you can immediately carry out all the necessary settings. First you should set the date and time. Then you can carry out the programming.

Operation is really simple. Just press the two keys on the TCT2ED simultaneously for several seconds, so as to get to the menu mode. Select the desired menu option with the DOWN key. The selected menu option is shown with a black background. Always confirm your choice with the UP key and then finally the desired function will be carried out.

4.2. Press both keys for several seconds simultaneously to get to the menu mode.

4.3. Select the desired function with the DOWN key until it is shown on the display with a dark background.

4.4. Then press the UP key to confirm your choice and to carry out the corresponding function.

5. Selection of language

5.1.Go into menu mode, select Setup and then Lang. Select English or another language. Then select End.

6. Setting of time and date

6.1. Go to menu mode, select Setup and then Date. With the DOWN key select day, month and year and confirm with the UP key.

6.2. Now select Time. With the DOWN key select hours and minutes and confirm with the UP key. Date and time are now correctly set.

6.3. Press the DOWN key until the desired day appears.

6.4. Then press the UP key. The arrow jumps onward for entering the month data.

7. Daily opening and closing of the roller shutters at a fixed time.

7.1. The TCT2ED can open your roller shutters in the morning at a fixed time and close them again in the evening at a fixed time. Go to menu mode. Select Setup, then Prog. and then Daily. Enter an opening time then confirm the hours and minutes with the UP key. Then enter a closing time and again confirm the hours and minutes with the UP key. Select Return and then again Return. Now select Mode and then Autom. Select On. The clock jumps back to normal mode. Go once again to menu mode. Select Mode and then Events. Select Weekly. On the display at the top left corner appears

A1. (Software version 1.41 appears **A** **■** **■**) The roller shutters will now open and close each day at the programmed times.

7.2. In program mode "A1" ("A" **■** **■**) the roller shutters open and close each day automatically at the programmed times.

7.3. In program mode "A7" ("A") the roller shutters open and close automatically each weekday at individually programmed times.

8. Automatic opening and closing of the roller shutters at different times (according to the day of the week)

8.1. You can also enter different opening and closing times for each day of the week. Go to menu mode. Select Setup, then Prog. and then Mo for Monday. Enter an opening time then confirm the hours and minutes with the UP key. Then enter a closing time and again confirm the hours and minutes with the UP key. Now select all the other weekdays and program the opening and closing times. Then select Return and then Return again. Now select Mode and then Autom. Select On. The clock jumps back to normal mode. Go once again into menu mode. Select Mode and then Events. Select Daily. On the display in the top left corner appears A7.

(Software version 1.41 appears **A** **■** **■**). The roller shutters will now open and close on each day individually according to the programmed times.

8.2. If instead of entering a time you enter a double hyphen (-) this will deactivate the opening or closing time. (-) appears after the 23. You can use this function to automatically close the roller shutters in the evenings so that you can then open them manually in the morning or vice versa.

8.3. Under the menu option Events you can easily switch between the two automatic programs. The settings of the respective deactivated program will still remain intact. *Daily-Prgr = 7 days (different adjustment for each day)*
Weekly-Prgr = 1 adjustment for all days (daily)

8.4. Under the menu option Autom you can switch off the automatic functions completely. Here too the programmed times will remain stored in the memory.

9. Accessories

9.1. The optical cable sensor WTMLS1 can be connected to the TCT2ED. This optical cable sensor is the ideal addition to the TCT2ED. With the WTMLS1 you can control your roller shutters according to the level of brightness. You can set this transmitter so that it automatically closes the shutters if the sun's radiation is too strong and then opens them again when the radiation level weakens. The WTMLS1 can also close your shutters in the evening at dusk. (In summer later and in winter earlier). This saves heating costs and energy. Installation of the WTMLS1 optical cable sensor can also be carried out retrogressively. You can obtain it as an accessory.

9.2. For assembly purposes it is essential to ensure that the unit has no power switched to it.

9.3. In addition you can connect the optional WTMLS1 optical cable sensor. With the optical cable sensor you can even have your roller shutters opened or closed according to the level of brightness. The safety entry protects your room from the sun's radiation when it is too strong.

10. If it doesn't function...

10.1. The clock will not jump to menu mode.
10.2. Hold down the two keys for more than 4 seconds.

- Check the power supply. If it has been interrupted a battery symbol appears on the display. The clock cannot then be changed to menu mode.

- Press the DOWN key as often as necessary until the desired menu option has appeared with a black background. Then press the UP key to confirm your choice.

10.3. The roller shutters don't react at the desired time.
- Check the date and time settings.

- Activate the program function in the Autom. menu

- Activate the correct program mode in the menu Events.

10.4. If the power fails the clock cannot be programmed. In the display a battery symbol lights up.

10.5. Hotline +49 (0) 68 38 907 100

11. Technical information

Operating voltage230V/50Hz
Contact load capacity,max. 5 A/230V
Switching voltagemax. 230V (AC)
Relay output230V, active for 60 sec.
Type of enclosure for control unitIP 40
Operating temperature range0°C to 40°C
LanguagesGerman, French, English
FrameBusch-Jäger alpha nea®
Conformity markCE

11.1. The internal battery is rechargeable and does not need to be replaced.

11.2. We reserve the right to make technical changes, which are in the interest of progress.

12. Reset

12.1. When the reset key is activated all program parameters and settings are deleted.

13. Warranty

Chamberlain warrants to the first retail purchaser of this product that the product shall be free from any defect in materials and/or workmanship for a period of 24 full months (2 years) from the date of purchase. Upon receipt of the product, the first retail purchaser is under obligation to check the product for any visible defects. Conditions: The warranty is strictly limited to the repairation or replacement of the parts of this product which are found to be defective and does not cover the costs or risks of transportation of the defective parts or product. This warranty does not cover non-defect damage caused by unreasonable use (including use not in complete accordance with Chamberlain's instructions for installation, operation and care; failure to provide necessary maintenance and adjustment; or any adaptations of or alterations to the products), labor charges for dismantling or reinstalling of a repaired or replaced unit or replacement batteries. A product under warranty which is determined to be defective in materials and/or workmanship will be repaired or replaced (at Chamberlain's option) at no cost to the owner for the repair and/or replacement parts and/or product. Defective parts will be repaired or replaced with new or factory rebuilt parts at Chamberlain's option. If, during the warranty period, the product appears as though it may be defective, contact your original place of purchase.

This warranty does not affect the purchaser's statutory rights under applicable national legislation in force nor the purchaser's rights against the retailer arising from their sales/purchase contract. In the absence of applicable national or EU legislation, this warranty will be the purchaser's sole and exclusive remedy, and neither Chamberlain nor its affiliates or distributors shall be liable for any incidental or consequential damages for any express or implied warranty relating to this product.No representative or person is authorized to assume for Chamberlain any other liability in connection with the sale of this product.

13.1. The optical cable sensor WTMLS1 can be connected to the TCT2ED. This optical cable sensor is the ideal addition to the TCT2ED. With the WTMLS1 you can control your roller shutters according to the level of brightness. You can set this transmitter so that it automatically closes the shutters if the sun's radiation is too strong and then opens them again when the radiation level weakens. The WTMLS1 can also close your shutters in the evening at dusk. (In summer later and in winter earlier). This saves heating costs and energy. Installation of the WTMLS1 optical cable sensor can also be carried out retrogressively. You can obtain it as an accessory.

13.2. For assembly purposes it is essential to ensure that the unit has no power switched to it.

13.3. In addition you can connect the optional WTMLS1 optical cable sensor. With the optical cable sensor you can even have your roller shutters opened or closed according to the level of brightness. The safety entry protects your room from the sun's radiation when it is too strong.

13.4. I, the undersigned, hereby declare that the equipment specified above and any accessory listed in the manual conforms to the above Directives and Standards.

13.5. Under the menu option Events you can easily switch between the two automatic programs. The settings of the respective deactivated program will still remain intact. *Daily-Prgr = 7 days (different adjustment for each day)*
Weekly-Prgr = 1 adjustment for all days (daily)

13.6. Under the menu option Autom you can switch off the automatic functions completely. Here too the programmed times will remain stored in the memory.

13.7. The optical cable sensor WTMLS1 can be connected to the TCT2ED. This optical cable sensor is the ideal addition to the TCT2ED. With the WTMLS1 you can control your roller shutters according to the level of brightness. You can set this transmitter so that it automatically closes the shutters if the sun's radiation is too strong and then opens them again when the radiation level weakens. The WTMLS1 can also close your shutters in the evening at dusk. (In summer later and in winter earlier). This saves heating costs and energy. Installation of the WTMLS1 optical cable sensor can also be carried out retrogressively. You can obtain it as an accessory.

13.8. Under the menu option Events you can easily switch between the two automatic programs. The settings of the respective deactivated program will still remain intact. *Daily-Prgr = 7 days (different adjustment for each day)*
Weekly-Prgr = 1 adjustment for all days (daily)

13.9. Under the menu option Autom you can switch off the automatic functions completely. Here too the programmed times will remain stored in the memory.

13.10. Under the menu option Events you can easily switch between the two automatic programs. The settings of the respective deactivated program will still remain intact. *Daily-Prgr = 7 days (different adjustment for each day)*
Weekly-Prgr = 1 adjustment for all days (daily)

13.11. Under the menu option Autom you can switch off the automatic functions completely. Here too the programmed times will remain stored in the memory.

13.12. Under the menu option Events you can easily switch between the two automatic programs. The settings of the respective deactivated program will still remain intact. *Daily-Prgr = 7 days (different adjustment for each day)*
Weekly-Prgr = 1 adjustment for all days (daily)

13.13. Under the menu option Autom you can switch off the automatic functions completely. Here too the programmed times will remain stored in the memory.

13.14. Under the menu option Events you can easily switch between the two automatic programs. The settings of the respective deactivated program will still remain intact. *Daily-Prgr = 7 days (different adjustment for each day)*
Weekly-Prgr = 1 adjustment for all days (daily)

13.15. Under the menu option Autom you can switch off the automatic functions completely. Here too the programmed times will remain stored in the memory.

13.16. Under the menu option Events you can easily switch between the two automatic programs. The settings of the respective deactivated program will still remain intact. *Daily-Prgr = 7 days (different adjustment for each day)*
Weekly-Prgr = 1 adjustment for all days (daily)

13.17. Under the menu option Autom you can switch off the automatic functions completely. Here too the programmed times will remain stored in the memory.

13.18. Under the menu option Events you can easily switch between the two automatic programs. The settings of the respective deactivated program will still remain intact. *Daily-Prgr = 7 days (different adjustment for each day)*
Weekly-Prgr = 1 adjustment for all days (daily)

13.19. Under the menu option Autom you can switch off the automatic functions completely. Here too the programmed times will remain stored in the memory.

13.20. Under the menu option Events you can easily switch between the two automatic programs. The settings of the respective deactivated program will still remain intact. *Daily-Prgr = 7 days (different adjustment for each day)*
Weekly-Prgr = 1 adjustment for all days (daily)

13.21. Under the menu option Autom you can switch off the automatic functions completely. Here too the programmed times will remain stored in the memory.

13.22. Under the menu option Events you can easily switch between the two automatic programs. The settings of the respective deactivated program will still remain intact. *Daily-Prgr = 7 days (different adjustment for each day)*
Weekly-Prgr = 1 adjustment for all days (daily)

13.23. Under the menu option Autom you can switch off the automatic functions completely. Here too the programmed times will remain stored in the memory.

13.24. Under the menu option Events you can easily switch between the two automatic programs. The settings of the respective deactivated program will still remain intact. *Daily-Prgr = 7 days (different adjustment for each day)*
Weekly-Prgr = 1 adjustment for all days (daily)

13.25. Under the menu option Autom you can switch off the automatic functions completely. Here too the programmed times will remain stored in the memory.

13.26. Under the menu option Events you can easily switch between the two automatic programs. The settings of the respective deactivated program will still remain intact. *Daily-Prgr = 7 days (different adjustment for each day)*
Weekly-Prgr = 1 adjustment for all days (daily)

13.27. Under the menu option Autom you can switch off the automatic functions completely. Here too the programmed times will remain stored in the memory.

13.28. Under the menu option Events you can easily switch between the two automatic programs. The settings of the respective deactivated program will still remain intact. *Daily-Prgr = 7 days (different adjustment for each day)*
Weekly-Prgr = 1 adjustment for all days (daily)

13.29. Under the menu option Autom you can switch off the automatic functions completely. Here too the programmed times will remain stored in the memory.

13.30. Under the menu option Events you can easily switch between the two automatic programs. The settings of the respective deactivated program will still remain intact. *Daily-Prgr = 7 days (different adjustment for each day)*
Weekly-Prgr = 1 adjustment for all days (daily)

13.31. Under the menu option Autom you can switch off the automatic functions completely. Here too the programmed times will remain stored in the memory.

13.32. Under the menu option Events you can easily switch between the two automatic programs. The settings of the respective deactivated program will still remain intact. *Daily-Prgr = 7 days (different adjustment for each day)*
Weekly-Prgr = 1 adjustment for all days (daily)

13.33. Under the menu option Autom you can switch off the automatic functions completely. Here too the programmed times will remain stored in the memory.

13.34. Under the menu option Events you can easily switch between the two automatic programs. The settings of the respective deactivated program will still remain intact. *Daily-Prgr = 7 days (different adjustment for each day)*
Weekly-Prgr = 1 adjustment for all days (daily)

13.35. Under the menu option Autom you can switch off the automatic functions completely. Here too the programmed times will remain stored in the memory.

13.36. Under the menu option Events you can easily switch between the two automatic programs. The settings of the respective deactivated program will still remain intact. *Daily-Prgr = 7 days (different adjustment for each day)*
Weekly-Prgr = 1 adjustment for all days (daily)

13.37. Under the menu option Autom you can switch off the automatic functions completely. Here too the programmed times will remain stored in the memory.



13.38. Under the menu option Events you can easily switch between the two automatic programs. The settings of the respective deactivated program will still remain intact. *Daily-Prgr = 7 days (different adjustment for each day)*
Weekly-Prgr = 1 adjustment for all days (daily)

13.39. Under the menu option Autom you can switch off the automatic functions completely. Here too the programmed times will remain stored in the memory.

13.40. Under the menu option Events you can easily switch between the two automatic programs. The settings of the respective deactivated program will still remain intact. *Daily-Prgr = 7 days (different adjustment for each day)*
Weekly-Prgr = 1 adjustment for all days (daily)

13.41. Under the menu option Autom you can switch off the automatic functions completely. Here too the programmed times will remain stored in the memory.

13.42. Under the menu option Events you can easily switch between the two automatic programs. The settings of the respective deactivated program will still remain intact. *Daily-Prgr = 7 days (different adjustment for each day)*
Weekly-Prgr = 1 adjustment for all days (daily)

13.43. Under the menu option Autom you can switch off the automatic functions completely. Here too the programmed times will remain stored in the memory.

13.44. Under the menu option Events you can easily switch between the two automatic programs. The settings of the respective deactivated program will still remain intact. *Daily-Prgr = 7 days (different adjustment for each day)*
Weekly-Prgr = 1 adjustment for all days (daily)

13.45. Under the menu option Autom you can switch off the automatic functions completely. Here too the programmed times will remain stored in the memory.

13.46. Under the menu option Events you can easily switch between the two automatic programs. The settings of the respective deactivated program will still remain intact. *Daily-Prgr = 7 days (different adjustment for each day)*
Weekly-Prgr = 1 adjustment for all days (daily)

13.47. Under the menu option Autom you can switch off the automatic functions completely. Here too the programmed times will remain stored in the memory.

13.48. Under the menu option Events you can easily switch between the two automatic programs. The settings of the respective deactivated program will still remain intact. *Daily-Prgr = 7 days (different adjustment for each day)*
Weekly-Prgr = 1 adjustment for all days (daily)

13.49. Under the menu option Autom you can switch off the automatic functions completely. Here too the programmed times will remain stored in the memory.

13.50. Under the menu option Events you can easily switch between the two automatic programs. The settings of the respective deactivated program will still remain intact. *Daily-Prgr = 7 days (different adjustment for each day)*
Weekly-Prgr = 1 adjustment for all days (daily)

13.51. Under the menu option Autom you can switch off the automatic functions completely. Here too the programmed times will remain stored in the memory.

13.52. Under the menu option Events you can easily switch between the two automatic programs. The settings of the respective deactivated program will still remain intact. *Daily-Prgr = 7 days (different adjustment for each day)*
Weekly-Prgr = 1 adjustment for all days (daily)

13.53. Under the menu option Autom you can switch off the automatic functions completely. Here too the programmed times will remain stored in the memory.

13.54. Under the menu option Events you can easily switch between the two automatic programs. The settings of the respective deactivated program will still remain intact. *Daily-Prgr = 7 days (different adjustment for each day)*
Weekly-Prgr = 1 adjustment for all days (daily)

13.55. Under the menu option Autom you can switch off the automatic functions completely. Here too the programmed times will remain stored in the memory.

13.56. Under the menu option Events you can easily switch between the two automatic programs. The settings of the respective deactivated program will still remain intact. *Daily-Prgr = 7 days (different adjustment for each day)*
Weekly-Prgr = 1 adjustment for all days (daily)

13.57. Under the menu option Autom you can switch off the automatic functions completely. Here too the programmed times will remain stored in the memory.

13.58. Under the menu option Events you can easily switch between the two automatic programs. The settings of the respective deactivated program will still remain intact. *Daily-Prgr = 7 days (different adjustment for each day)*
Weekly-Prgr = 1 adjustment for all days (daily)

13.59. Under the menu option Autom you can switch off the automatic functions completely. Here too the programmed times will remain stored in the memory.

13.60. Under the menu option Events you can easily switch between the two automatic programs. The settings of the respective deactivated program will still remain intact. *Daily-Prgr = 7 days (different adjustment for each day)*
Weekly-Prgr = 1 adjustment for all days (daily)

13.61. Under the menu option Autom you can switch off the automatic functions completely. Here too the programmed times will remain stored in the memory.

13.62. Under the menu option Events you can easily switch between the two automatic programs. The settings of the respective deactivated program will still remain intact. *Daily-Prgr = 7 days (different adjustment for each day)*
Weekly-Prgr = 1 adjustment for all days (daily)

13.63. Under the menu option Autom you can switch off the automatic functions completely. Here too the programmed times will remain stored in the memory.

13.64. Under the menu option Events you can easily switch between the two automatic programs. The settings of the respective deactivated program will still remain intact. *Daily-Prgr = 7 days (different adjustment for each day)*
Weekly-Prgr = 1 adjustment for all days (daily)

13.65. Under the menu option Autom you can switch off the automatic functions completely. Here too the programmed times will remain stored in the memory.

13.66. Under the menu option Events you can easily switch between the two automatic programs. The settings of the respective deactivated program will still remain intact. *Daily-Prgr = 7 days (different adjustment for each day)*
Weekly-Prgr = 1 adjustment for all days (daily)

13.67. Under the menu option Autom you can switch off the automatic functions completely. Here too the programmed times will remain stored in the memory.

13.68. Under the menu option Events you can easily switch between the two automatic programs. The settings of the respective deactivated program will still remain intact. *Daily-Prgr = 7 days (different adjustment for each day)*
Weekly-Prgr = 1 adjustment for all days (daily)

13.69. Under the menu option Autom you can switch off the automatic functions completely. Here too the programmed times will remain stored in the memory.

13.70. Under the menu option Events you can easily switch between the two automatic programs. The settings of the respective deactivated program will still remain intact. *Daily-Prgr = 7 days (different adjustment for each day)*
Weekly-Prgr = 1 adjustment for all days (daily)

13.71. Under the menu option Autom you can switch off the automatic functions completely. Here too the programmed times will remain stored in the memory.

13.72. Under the menu option Events you can easily switch between the two automatic programs. The settings of the respective deactivated program will still remain intact. *Daily-Prgr = 7 days (different adjustment for each day)*
Weekly-Prgr = 1 adjustment for all days (daily)

13.73. Under the menu option Autom you can switch off the automatic functions completely. Here too the programmed times will remain stored in the memory.

13.74. Under the menu option Events you can easily switch between the two automatic programs. The settings of the respective deactivated program will still remain intact. *Daily-Prgr = 7 days (different adjustment for each day)*
Weekly-Prgr = 1 adjustment for all days (daily)

13.75. Under the menu option Autom you can switch off the automatic functions completely. Here too the programmed times will remain stored in the memory.

13.76. Under the menu option Events you can easily switch between the two automatic programs. The settings of the respective deactivated program will still remain intact. *Daily-Prgr = 7 days (different adjustment for each day)*
Weekly-Prgr = 1 adjustment for all days (daily)

13.77. Under the menu option Autom you can switch off the automatic functions completely. Here too the programmed times will remain stored in the memory.

13.78. Under the menu option Events you can easily switch between the two automatic programs. The settings of the respective deactivated program will still remain intact. *Daily-Prgr = 7 days (different adjustment for each day)*
Weekly-Prgr = 1 adjustment for all days (daily)

13.79. Under the menu option Autom you can switch off the automatic functions completely. Here too the programmed times will remain stored in the memory.

13.80. Under the menu option Events you can easily switch between the two automatic programs. The settings of the respective deactivated program will still remain intact. *Daily-Prgr = 7 days (different adjustment for each day)*
Weekly-Prgr = 1 adjustment for all days (daily)

13.81. Under the menu option Autom you can switch off the automatic functions completely. Here too the programmed times will remain stored in the memory.

13.82. Under the menu option Events you can easily switch between the two automatic programs. The settings of the respective deactivated program will still remain intact. *Daily-Prgr = 7 days (different adjustment for each day)*
Weekly-Prgr = 1 adjustment for all days (daily)

13.83. Under the menu option Autom you can switch off the automatic functions completely. Here too the programmed times will remain stored in the memory.

13.84. Under the menu option Events you can easily switch between the two automatic programs. The settings of the respective deactivated program will still remain intact. *Daily-Prgr = 7 days (different adjustment for each day)*
Weekly-Prgr = 1 adjustment for all days (daily)

</